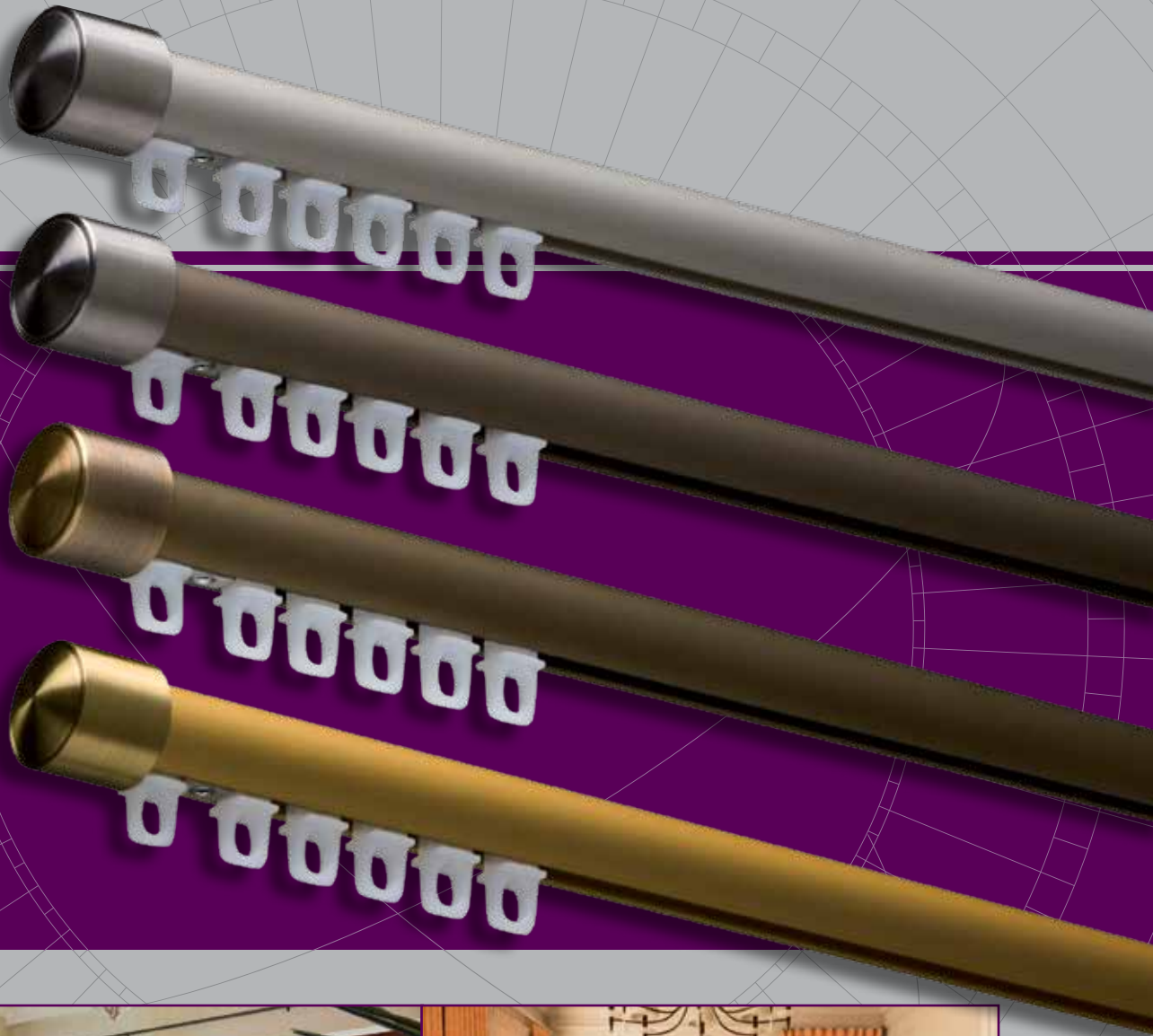


CRS[®] **Channel Rod System**

ELEGANT AND TRENDY TO ADD STYLE AND FUNCTIONALITY TO ANY ROOM . . .



CONTEMPORARY



TRADITIONAL

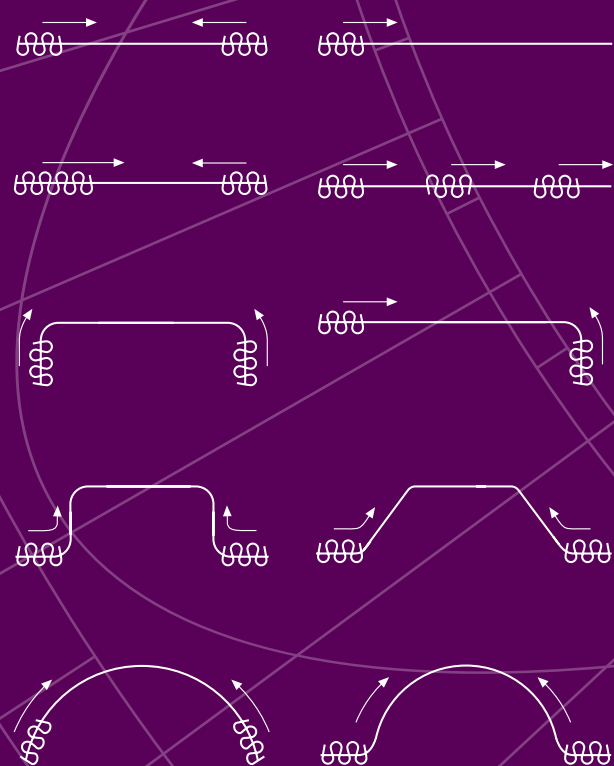
FOREST

DRAPERY HARDWARE

Product Information

- Elegant and trendy channel rod system.
- Easy and quick assembly.
- Rod available 1 1/8" thickness.
- Bendable, both with an inside and outside corner 15 3/4" radius
- Colors: white, bronze, antique bronze, satin nickel and gold.
- The brackets and end caps are available in white, satin nickel and gold.
- Length: 19'
- Rail quality: aluminum, chromated, powder coated or anodized.

Applications



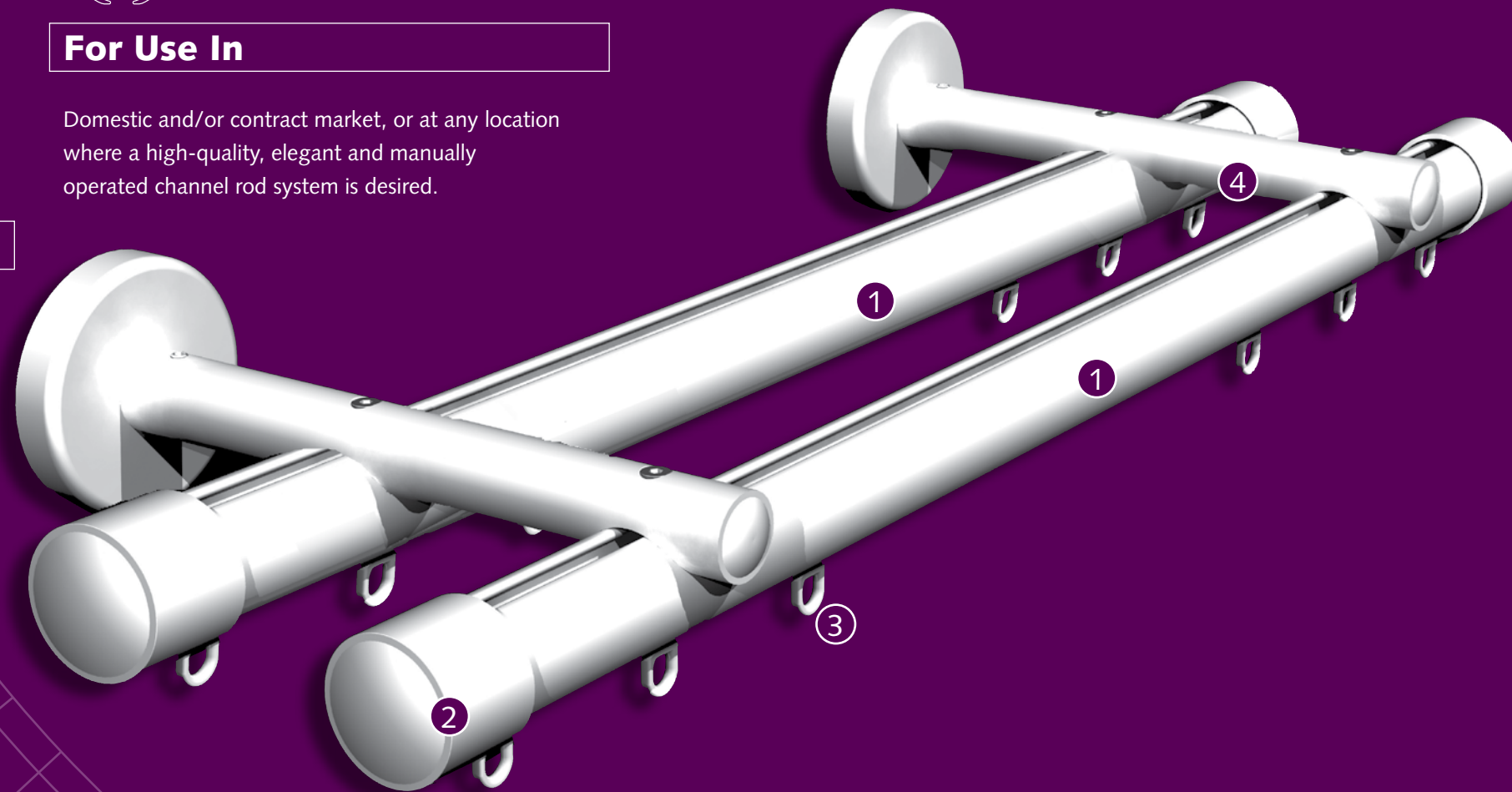
Rail Specifications

- Shown actual size 1:1
- Aluminum Extrusion
- Weight: 1 lb/ft.
- Dimensions: 1 1/8" / 28 mm diameter



For Use In

Domestic and/or contract market, or at any location where a high-quality, elegant and manually operated channel rod system is desired.



- ① CRS Rod 1 1/8" / 28 mm
- ② CRS End Cap
- ③ CRS Carrier
- ④ CRS Wall Bracket Double

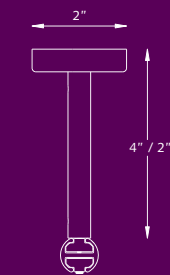
Bending / Curving

The 1 1/8" rod can be curved and reverse curved by using a radius of 8"

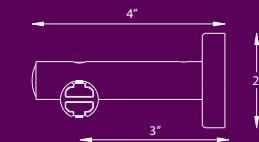


Mounting Brackets

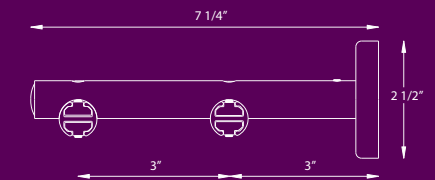
CRS Ceiling Support
2" or 4"
1 1/8" / 28 mm



CRS Wall Support, Single
3" Ø 1 1/8" / 28 mm
4 3/4" Ø 1 1/8" / 28 mm
6 1/4" Ø 1 1/8" / 28 mm



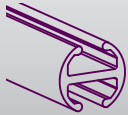
CRS Wall Support, Double
7 1/4" Ø 1 1/8" / 28 mm



Available Finishes

- 25 - White
- 29 - Satin Nickel
- 32 - Bronze
- 81 - Antique Bronze
- 109 - Gold

CRS CHANNEL ROD 1 1/8" / 28mm



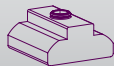
51419-XX 10/bundle
Extruded aluminum, chromated, \$11.95/ft.
powder coated, 19'. Available in
white-25, satin nickel-29, bronze-32,
antique bronze-81 and gold-109.

CRS CARRIER



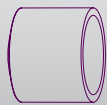
52110-25 500/box
UV-proof, synthetic material \$0.29 ea.
10 carriers on a break-away strip

CRS METAL END-STOP W/ SCREW



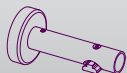
52420-25 100/box
For attaching one carrier \$10.95 ea.
as an end stop

CRS FINIAL



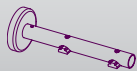
52430-XX 10/box
End cap finial \$29.95 ea.

CRS WALL BRACKET, 4 3/4"



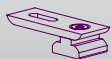
53402-XX 2/box
Single bracket \$56.99 ea.

DOUBLE WALL BRACKET, 6 1/4"



53406-XX 2/box
Double bracket \$81.79 ea.

CRS CEILING BRACKET



53408-XX 100/box
Aluminum \$19.95 ea.

CRS INSIDE WALL BRACKET



53412-XX 2/box
To install the rod inside \$68.45 ea.
a window frame.

CRS RAIL CONNECTOR



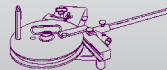
53413-90 10/box
Aluminum, 3" \$14.69 ea.

COMPACT BENDING TOOL



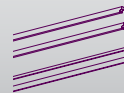
5002-00 1/box
Includes 2' filler strip for \$1,181.48 ea.
basic angles (90, 45, bay
windows, etc.).

CONTRACT BENDING TOOL



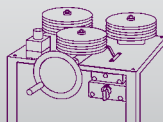
55001-00 1/box
Including 8" radius wheel \$2,278.59 ea.
and filler strips.
55301-00 1/box
CRS Bending Wheels \$1,631.81 ea.

CRS BENDING STRIPS



55308-00 1/pkg
1 1/8" / 28 mm, 23' 1/2" \$90.49 ea.
55309-00 1/pkg
1 1/8" / 28 mm, 23' \$219.59 ea.

ELECTRONIC CONTINUOUS CURVER



5004-00 1/box
110 volt automated curver \$13,271.78 ea.
for accurate and high
output curving.
5005-00 1/box
Curving Wheels \$820.31 ea.

FOREST

— DRAPERY HARDWARE —

For a distributor in your area go to
www.forestgroup.com